

KARIBAN

REFERENCE : K962

SIZES : XS_S_M_L_XL_XXL_3XL

COMPOSITION :

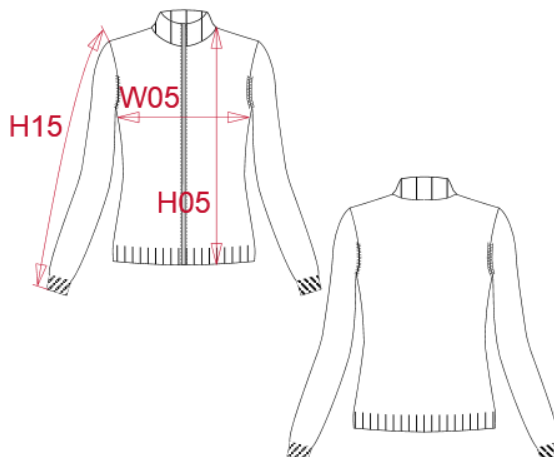
Main fabric : Knit Cotton / Acrylic yarn (32/2) 50/50 - 290 50% cotton / 50%acrylic

WEIGHT :

Main fabric : ± 290 gsm

ARTICLE WEIGHT :

420 gr/pc



DESCRIPTION
Français : Cardigan femme zippé
English : Ladies' zip cardigan
Nederlands : Dames vestje met rits
Deutsch : Damen strickjacke
Español : Chaqueta con cremallera para mujer
Italiano : Cardigan donna full zip
Português : Casaco de malha de senhora

COLORS	PANTONE SERIGRAPHIE
Black	Black
Grey melange	Based on 402C
Navy	433C

MEASUREMENT							
Description	XS	S	M	L	XL	2XL	3XL
H05 (L) Hauteur totale / Total height	59	61	63	65	67	69	71
W05 (L) 1/2 largeur poitrine à 1.5cm de l'emmanchure / 1/2 chest width at 1.5cm below armhole	42	45	48	51	54	57	60
H15L (L) Longueur manche longue / Long sleeve length	59	60	61	62	63	64	65

CARE LABEL

PACKING	
Box	10 pcs / box XS => L:60cm W:40cm H:15cm GW:3.30kg NW:4.90kg S => L:60cm W:40cm H:15cm GW:3.50kg NW:5.10kg M => L:60cm W:40cm H:15cm GW:3.70kg NW:5.30kg L => L:60cm W:40cm H:15cm GW:4.00kg NW:5.60kg XL => L:60cm W:40cm H:15cm GW:4.30kg NW:5.90kg XXL => L:60cm W:40cm H:15cm GW:4.50kg NW:6.10kg 3XL => L:60cm W:40cm H:15cm GW:4.80kg NW:6.40kg